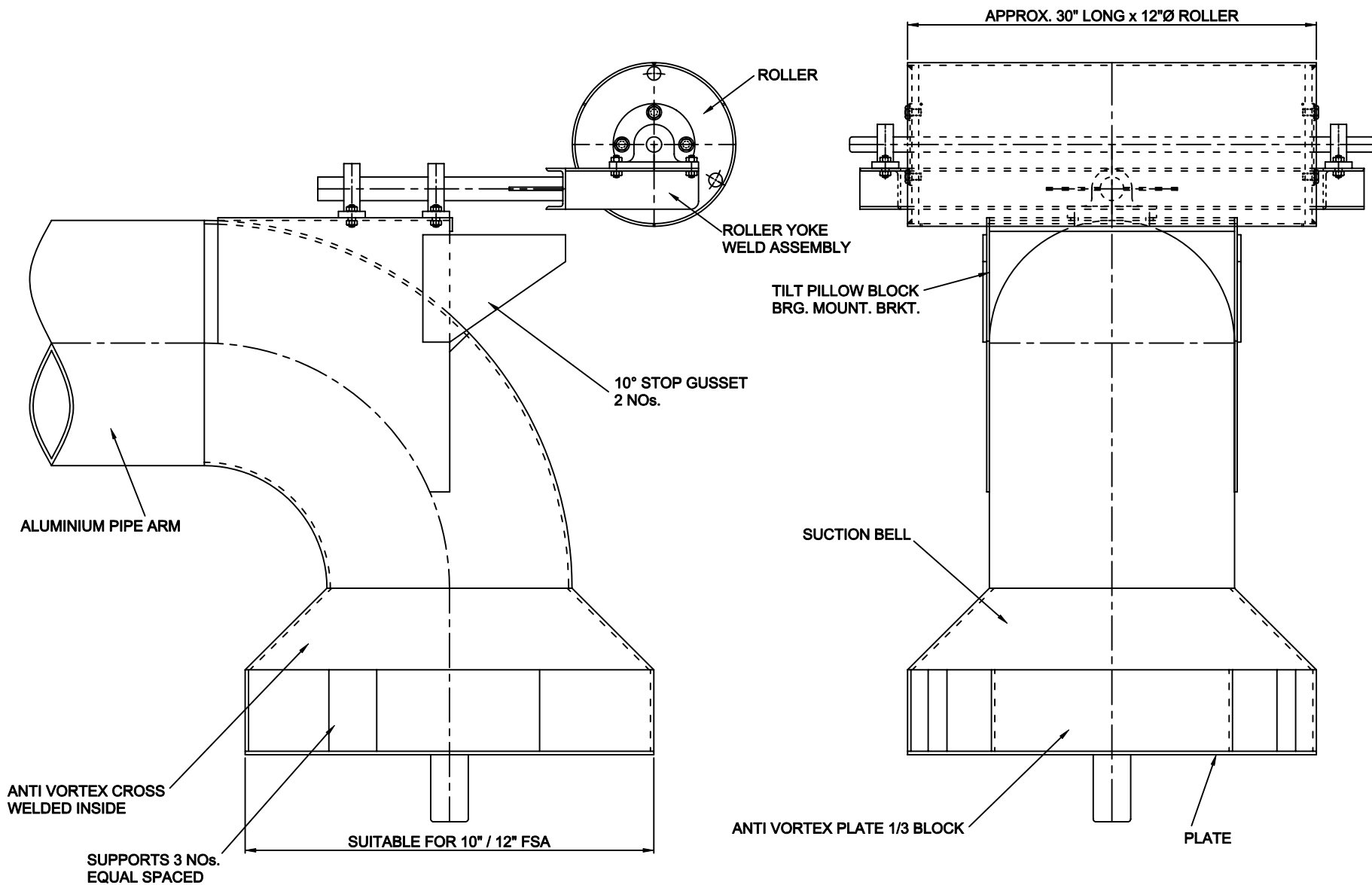




Photograph showing an existing GNY project of 18" Floating Suction Assy. with roller and two side floats, in USA. Also shows floating roof with Aluminum channel on which the roller are rolling. Channels will be supplied and installed by buyer at the site.



Photograph showing an existing GNY project of 18" Floating Suction Assy. with roller and two side floats, in USA. Also shows floating roof with Aluminum channel on which the roller are rolling. Channels will be supplied and installed by buyer at the site.

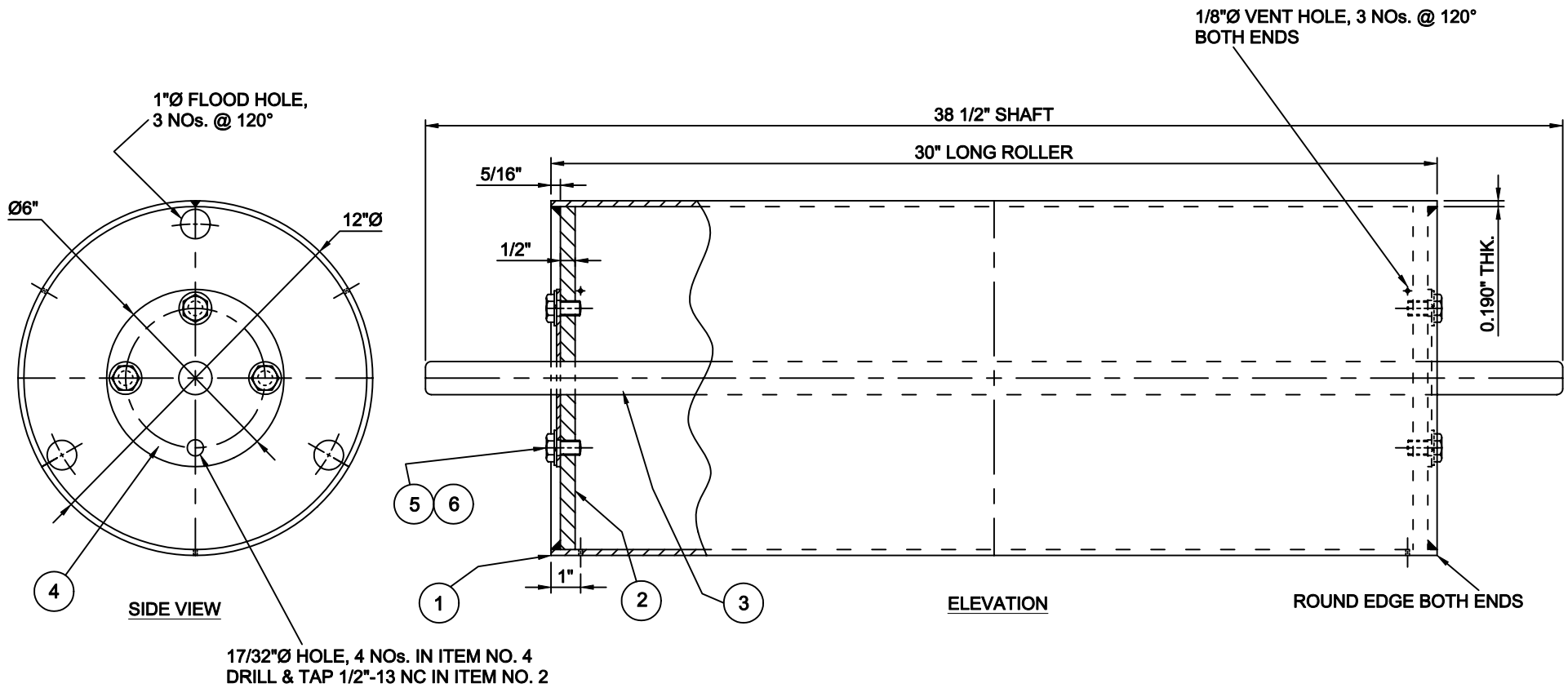


NOTE: ALL DIMENSIONS ARE IN INCHES U.O.N.

GNY EQUIPMENT, LLC.
 20 DREXEL DRIVE
 BAY SHORE, NEW YORK 11706
 U.S.A.
www.gnyequipment.com

**TYPICAL DETAIL FOR
 SUCTION END AND ROLLER ASSEMBLY**

SKETCH NO.:
 US - 1207 - 03
 Rev. 0
 Sheet 1 of 2
 Date: April, 17, 2008



BILL OF MATERIAL		
ITEM NO.	QTY.	DESCRIPTIONS
01	01	ROLLER TUBE 0.190" THK. ALUMINIUM 6061-T6 12" O.D. x 30" LONG
02	02	ROLLER END PLATE 1/2" THK. ALUMINIUM 6061-T6 x 11 19/32" DIA DRILLED FOR SHAFT
03	01	SHAFT 1 1/8"Ø x 38 1/2" LONG T-316 SST.
04	02	SHAFT BOLT COLLER, DRILLED, 10 GAUGE, T-304 SST. x 6" Ø WELD TO SHAFT
05	04	1/2"-13 NC HEX HEAD BOLT, 18-8 SST x 3/4" LONG
06	04	1/2" SPLIT LOCK WASHER, 18-8 SST.

NOTE: ALL DIMENSIONS ARE IN INCHES U.O.N.

GNY EQUIPMENT, LLC.
 20 DREXEL DRIVE
 BAY SHORE, NEW YORK 11706
 U.S.A.
www.gnyequipment.com

**TYPICAL DETAILS FOR
 ROLLER ASSEMBLY NON BOUYANT
 PART NO. GNY6534012**

SKETCH NO.:
 US - 1207 - 03
 Rev. 0
 Sheet 2 of 2
 Date: April, 17, 2008